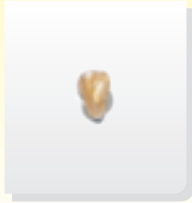


lingualmatrix™

Bonding with lingual matrix

With the form fit customized base of the bracket allows direct bonding of the brackets manufactured by lingual matrix



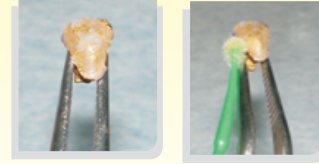
1 You will receive precoated brackets



2 Condition the lingual surface of the tooth



3 Prime and bond



4 Place a small composite on the surface



5 Gently rock it on the tooth surface till you have a tactile feeling of the fit

6 Light cure for 20 seconds from the occlusal and gingival

7 Repeat steps 1 through 6 for the next bracket



8 A single arch can be easily completed in about 20-25 minutes



9 Ready to ligate

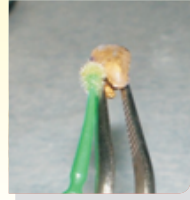


Rebonding with brackets manufactured by lingual matrix

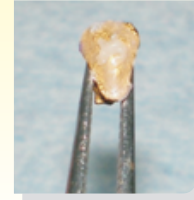
1. Sandblast the bracket base



2. Apply metal primer - vivadent - wait for 90 seconds



3. Apply prime and bond cure air blow cure



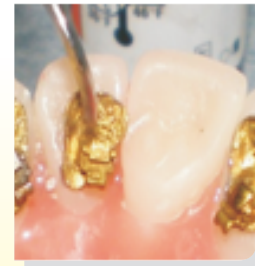
4. Apply small amount of composite on the bracket base



5. Remove composite from the tooth surface



6. Etch and bond the tooth surface



7. Gently rock it on the tooth surface till you have a tactile feeling of the fit

8. Light cure for 20 seconds from the occlusal and gingival

Rebonding would take as much time as bonding

Misplaced or lost brackets manufactured by lingual matrix

Send a formal request to lingual matrix stating the case name or the date of delivery And the tooth no /nos

We will reprint the brackets and send them within two weeks (if you want them to be coated) and within a

week if you ask for uncoated brackets

■ www.lingualmatrix.com

M : 98923 10989
98203 40245

■ lingualmatrix@gmail.com

